

EAST LOCALITY PLAN 2022

INTRODUCTION

Doncaster is a “place of places” with diverse communities, different strengths and equally variable needs. The locality approach is a way in which Doncaster Council and partners can get closer to communities to understand these strengths and different needs. By hearing from them what it is like to live in different neighbourhoods across the borough we will be able to shape our services, strategies and investment to better reflect these differences.

At the core of this approach is the commitment to hear the voices of local people, to understand the strengths in our neighbourhoods and build capacity in communities so that they can take control of their own destiny. No one person or place should be left behind.

There are four strands to the locality approach:

- We must engage with and empower local communities, understanding their strengths and supporting them on their own terms. We call this “Asset Based Community Development”.
- We must coordinate our services, and our partners on each locality footprint, especially ensuring that people, families and communities with the most needs receive a joined up response. We call this “Local Solutions”.
- We must attract investment into our Localities and make best use of our existing resources, so that funding supports the changes that local people want to see on the issues where need is greatest. “Locality Commissioning”.
- We must tie the above actions together so that there is a local deal for each of our communities that reflects their needs and aspirations. This will be done by developing a series of “Locality Plans”.

This is the first version of the East Locality Plan.

WHAT IS A LOCALITY PLAN?

Locality plans will look at how we can work together to strengthen communities and improve the lives and opportunities for the residents living there.

A locality plan needs to be ever-changing in line with the needs of the community. In 2019, we could never have predicted the impact a global pandemic could have had on residents of Doncaster, so it is important that these plans remain agile and cognisant of the different situations and external factors that are impacting on communities.

The first iteration of this East Locality Plan will look to:

- Define the priorities for improving the area over the next year
- Showcase how resources will be deployed at a local level to support and facilitate real change within communities.
- Truly understand the different communities that make up the East Locality.
- Provide a steer on how we will implement wider strategies, at a community level.

In bringing this plan together we have asked, and will continue to ask, local people across Doncaster what would make the area better.

The following pages highlight what is good about our local communities and what you would like to see improve....

WHAT IS THE EAST LOCALITY?

For the purpose of delivering the locality approach, Doncaster has been split into four localities, each consisting of a number of different communities.

The 'East' locality includes the following wards:

- Armthorpe
- Edenthorpe and Kirk Sandall
- Hatfield
- Stainforth and Barnby Dun
- Thorne and Moorends

Although each of the above wards are grouped under the East locality, they will all also be considered and supported for the unique communities they are.

It is home to Thorne Leisure Centre, Armthorpe Leisure Centre, Castle Park, Sandall Beat Wood, and the Canal Water Way covering Kirk Sandall and Barnby Dun and Hatfield House. It has great access to green space and walks. The East locality also has Thorne as principal town centre in Doncaster attracting visitors, business and investment opportunities. Additionally, it has several Parish and Town councils.

WHAT DO RESIDENTS THINK OF THE EAST LOCALITY?

In order to develop this plan, extensive research was undertaken with the people who live, and often work in the East Locality. Although we have lots of data and population breakdown information about the different communities, there is no replacement for getting the views directly from the people who know the area best – those who live there.

We spoke to communities through a range of methods.



WE ASKED, YOU SAID ...

We asked

What do you like about where you live?

What would you like to improve?

You said

Like

- Community spirit and mining history
- Local support, volunteering and community groups
- Green space, amenities and shops.

Improve

- Mental and physical health
- Housing, employment and business
- Community safety
- Youth provision & community needs
- Environment

"Armthorpe is an independent place and very sufficient and great community spirit with proud miners' community who lived in the area for long time"

"We have lost youth centres, the current building is now empty."

"Assets are bus services, volunteers, groups and activities, leisure centre, capacity building."

"The pavilion has worked with young people in the past, and it's a great venue"

"I like the people/families and Quarry Park is nice."

"I am happy with my area it has nice people"

"Bigger park, full size football pitch/goals or a place like Goals."

"Edenthorpe community centre is a great little hall, good size for community get together"

"People not to burn down the parks and ruin them".



Armthorpe

Overview

The Ward is made up of 1 village; Armthorpe with a population of 14,440.

Armthorpe is a vibrant village with a host of shops, facilities and community venues. A village of mining history, which is shared proudly with the community.

Armthorpe has a range of properties, primary and secondary schools and excellent transport links that attract residents to the area.

Armthorpe village is surrounded by attractive and open countryside and seeks to enhance the quality and role of the natural environment and its many features. (Armthorpe NDP, 2021)

This ward has the following plans:

- Main Town Local Settlement Plan
- Neighbourhood Plan

Key facts about your community

All age Population of

14,440

Healthy Life Expectancy- (in % avg.)

Males: 79

Females: 81

0 areas in this

ward are in the England's most deprived 10%

Crime Rate

82 per 1000

population

ASB Crime Rate

12 per 1000

population

All domestic Abuse crime for year up to Nov 2021-

15 per 1000

population

15%

of households in fuel poverty

4% of working age

population claiming Universal Credit (Oct 21)

What you said you liked:



People, community champions, spirit and mining history



Local support, the Parish Council and Miner's Welfare



Green Space and local amenities

What you would like to improve



Improving community safety and tackling ASB



More employment opportunities and empowering local people



More activities for young people

"Assets are the Parish council, sports, junior parish council, youth club and qualification opportunities."

"There has been a social change and poverty has been increasing. Community needs empowering with employment opportunities."

"Poor education and employment opportunities."

"I am happy with my area it has nice people"

"Armthorpe is an independent place with great community spirit with proud miners' community who lived in the area for long time"

"The pavilion has worked with young People in the past, and it's a great venue"

"Social isolation is a big issue in Armthorpe, lots of people struggle to find someone to talk to"

Edenthorpe and Kirk Sandall

Overview

The Ward is made up of 2 villages; Edenthorpe and Kirk Sandall with a population of 9,954

Edenthorpe is a Friendly and thriving village and civil parish with a range of local shops, social and community spaces and large areas of woodland and open space.

Kirk Sandall is a popular area, benefitting from strong transport links, including access to Kirk Sandall railway station. Kirk Sandall also has access to a local shopping precinct and recreational activities and facilities.

This ward has the following plans:

- Edenthorpe Neighbourhood Plan (in development)
- Barnby Dun and Kirk Sandall Neighbourhood Plan

Key facts about your community

All age Population of

9,954

Healthy Life Expectancy- (in % avg.)

Males: 81

Females: 84

0 areas in this

ward are in the England's most deprived 10%

Crime Rate

81 per 1000

population

All domestic Abuse crime for year up to Nov 2021-

8 per 1000

population

ASB Crime Rate

17 per 1000

population

11%

of households in fuel poverty

3% of working age

population claiming Universal Credit (Oct 21)

What you said you liked:



Community spirit and mining history



Local support, the Parish Council, Howard Pavilion, Rokeby Gardens and Scouts Group



Local shops and amenities

What you would like to improve



Improving community safety, tackling ASB and burglaries



More employment opportunities



More activities for young people and engagement with families

"Priorities are the loss of engagement with family and young people and provision for the young people."

"Assets are Edenthorpe Parish Council, Howard Pavilion, Rokeby Gardens, Friends of Edenthorpe and Kirk Sandall Community Group, the allotment"

"We have lost youth centres, the current building is now empty."

"Increasing connectivity to the railway"

"Edenthorpe, Kirk Sandall and Barnby Dun share similarities in terms of communities' priorities and assets."

"The parish council provides some activities for young people and dance school in Kirk Sandall"

"More supported living in the area is needed. Multi-generational activities would get people more engaged"



Hatfield

Overview

Hatfield ward is made up of several communities: Hatfield, Dunscroft, Dunsville, Hatfield Woodhouse. Hatfield ward population has a total population of 17,584.

Hatfield ward area has historically been used as agricultural land and was split into areas that today we know as Dunscroft, Dunsville both of which have access to the open green spaces in Quarry Park and all the surrounding shops and restaurants and food outlets.

Hatfield Woodhouse is a small, semi-rural village sitting opposite Hatfield, Dunsville and Dunscroft. Hatfield Water Park, offers a range activities for local communities as well as attracting visitors to the area.

This ward has the following plans:
Main Town Local Settlement Plan for Hatfield, Dunscroft and Dunsville

Key facts about your community

All age Population of

17,584

Healthy Life Expectancy- (in % avg.)

Males: 79

Females: 82

2 areas in this ward are in the England's most deprived 10%

Crime Rate

90 per 1000 population

All domestic Abuse crime for year up to Nov 2021-

14 per 1000 population

ASB Crime Rate

15 per 1000 population

16%

of households in fuel poverty

4% of working age

population claiming Universal Credit (Oct 21)

What you said you liked:



The people, community spirit and mining history



Local support, Dunscroft Community Centre and sports clubs



Green space and transport links



What you would like to improve



Improving community safety and tackling ASB



More employment opportunities



More activities for young people and funding support for grassroots

"Estate of Lindholme used to be an RAF housing development for RAF officers. They have small gymnasium outside the fence. The Green Hut for boxing and training camp. There may be still a Rugby club..."

"The communities in the Hatfield ward are very different and inequality is an issue; Dunscroft is a deprived community whilst Hatfield is more affluent."

"...Transport is very good serving the local residents and the prison visitors."

"Community spirit in Dunscroft, community volunteers serving dinners for the over 60s."

"More active patrols, PCSO presence etc. to make people feel like there's actually someone there if they need anything, and to feel as though something is being done when you have an issue."

"To push for more funding and activities for kids after school as there is not much to do."

"Priority of the ward is unemployment; pop ups with employers could help. Education and help people finding employment opportunities and give them confidence. Job centres used to have a more active role in the past."



Stainforth & Barnby Dun

Overview

This ward is made up of two communities; Stainforth and Barnby with a population of 9,930

Stainforth is an expanding village with a central spine of shops, supermarkets and food outlets. Stainforth is an active community supported by a civil and town parish with Town Council status granted to the Parish Council in 1998.

Barnby Dun is closely linked with Kirk Sandall sharing a Parish Council. Barnby Dun has a variety of amenities, with local schools, social clubs, farm shops and regular theatre productions. An active community supported by councillors and local community,

This ward has the following plans:

Main Town (with Dunscroft, Dunsville and Hatfield)

- Well Doncaster Plan
- Shaping Stainforth
- Stainforth Neighbourhood Development Plan (In development)
- Barnby Dun and Kirk Sandall Neighbourhood Plan
- Stainforth Town Deal

Key facts about your community

All age Population of

9,930

Healthy Life Expectancy- (in % avg.)

Males: 79

Females: 81

3 areas in this ward are in the England's most deprived 10%

Crime Rate

128 per 1000 population

All domestic Abuse crime for year up to Nov 2021-

25 per 1000 population

ASB Crime Rate

25 per 1000 population

18%

of households in fuel poverty

7% of working age

population claiming Universal Credit (Oct 21)

What you said you liked:



The people, community spirit and mining history



Local support, Phoenix Social Club, Family Hub and Stainforth 4 all



Local shops, amenities and good transport links

What you would like to improve



Improving community safety and tackling ASB



More employment opportunities and improvement to market place



More activities for young people and better leisure facilities

"...Employment and upskilling for the local workforce, education for young people and help them for future careers, Stainforth high street needs improvement and shops need to get smart"

"Canal walks, we have a new road into our village but I even feel vulnerable walking there if there is no one else around. Think as I have got older I cannot run as fast as I used to! Whenever & wherever I walk I always look for escape routes should I need one."

"Stainforth high street needs improvement and shops need to get smart"

"People not to burn down the parks and ruin them"

"Need for fully qualified youth worker and youth club. More sports activities for young people; football, boxing, etc. Employment and upskilling for the local workforce"

"I like that my best friend lives near me"

"Good community where everyone knows each other, I feel very safe. They have just built a new park and things seem to be improving. Easy to get into town on the bus. Lots of green spaces"

Thorne & Moorends

Overview

This ward is made up of two communities; Thorne and Moorends with a population of 17921

Thorne is a market town and civil parish, and still boast many shops and services that are used by local residents and visitors. A history of boat building is evident in the thriving marinas, boat yards and boat building still in Thorne. The Flat landscape of Thorne enables access to many green space, including marked walks.

Moorends is a village has developed into its own community serviced by shops, schools, allotments and sports facilities. It is part of the civil parish of Thorne. Moorends is the gateway to Thorne Moors, part of the Humberhead Peatlands Natural Nature Reserve.

This ward has the following plans:

- Main Town (Thorne)
- Well Doncaster Plan
- Thorne and Moorends Neighbourhood Development Plan (In development)
- Thorne and Moorends Masterplan

Key facts about your community

All age Population of

17,921

Healthy Life Expectancy- (in % avg.)

Males: 77

Females: 81

1 area in this ward are in the England's most deprived 10%

Crime Rate

95 per 1000 population

All domestic Abuse crime for year up to Nov 2021-

20 per 1000 population

ASB Crime Rate

18 per 1000 population

19%

of households in fuel poverty

6% of working age

population claiming Universal Credit (Oct 21)

What you said you liked:



The people, community spirit and multi-cultural

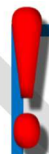


Local support, Moorends Welfare and the OAP Centre



Local amenities, shops and good transport links in Thorne

What you would like to improve



Improving community safety and tackling ASB



More employment opportunities and improvement to Town Centre



More activities for young people and funding support for grassroots

"In the past there used to be a Picture House. Used to be dances. Thorne Leisure Centre needs improving but glad we still have it. If you don't play football there is nothing to do. Would like more clothes shops. There is no infrastructure for the new housing developments"

"Used to be more varieties of shops and didn't need to go to Doncaster to do our shopping, police presence, car parks need to be free and available near Town centre so people can support local business instead of going to the big retails"

"Bigger park, full size football pitch/goals or a place like GOALS"

"Asset in Thorne is: OAP centre."

"Used to be stronger community feel. This has changed since shutting down the mines. The present: now the town is more inclusive and a big migration community has arrived and been received with friendliness"

"Priorities in Moorends: more support for the grass root community groups. Help with bid writing and funding applications".

"Assets are bus service, volunteers, groups and activities, leisure centre, capacity building, and Master plan for Thorne and Moorends."

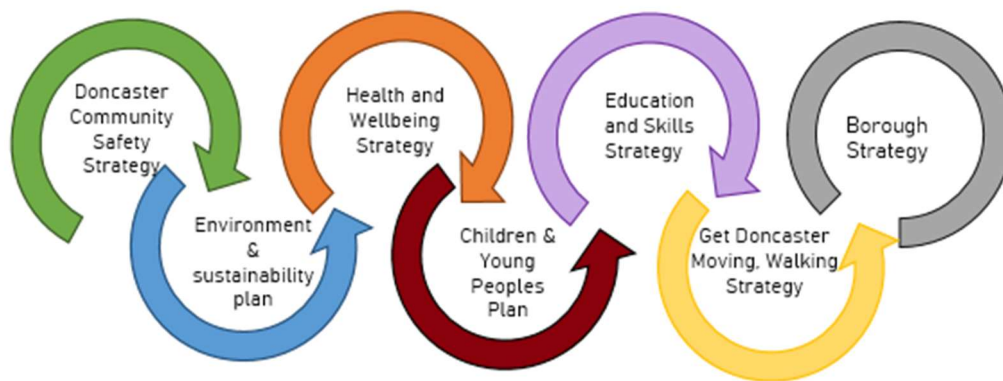


What we did with what you said

Consultation with communities and partners provided each community within the East with data and information that has been looked at in detail.



A sample of the plans and strategies considered



We will make sure we link the actions and activity from existing Strategies and Plans to build on the assets and strengths in our communities and address any gap through...



So what are the East area priorities?

At the beginning of this plan we stated we would define the priorities for improving the area over the next year. We have outlined how we have analysed the information and have identified the following priorities:



On the following pages, we have illustrated further details of what actions will support improvement for each priority theme and how this will build on and link to existing strategies, plans and activity.

**The plans and strategies detailed in the coming pages are examples of how we are currently working to support these priority areas and are not meant to represent a complete list. Extracts need to be considered in the context of the whole plan or strategy document.*

Supporting Plans and Strategies

Doncaster Community Safety Partnership

Effectively manage anti-social behaviour through proactive and responsive approaches, supported by improved mechanisms to report and respond to incidents.

Improve community confidence in reporting anti-social behaviour by providing reassurance that we will listen, understand and build relationships with victims and communities.

Deliver youth diversion schemes to ensure young people avoid criminal convictions and are supported in the community, where appropriate.

Further reduce the rates of Serious Acquisitive Crime across the borough through targeted interventions in high crime areas.

Children and Young Peoples Plan LOCYP engagement and Partnership

Work with the Safer Stronger Doncaster partners to reduce ASB in and around Doncaster.

Doncaster Borough Strategy 'Doncaster Delivering Together'

Tackle crime and ASB and the root causes

Tackle domestic abuse and its root causes

Children and Young Peoples Plan LOCYP engagement and Partnership

Increase the availability and quality of activities, groups and programmes for CYP. Make sure we are providing quality activity programmes for our most vulnerable and disadvantaged CYP. Plan community and celebratory events for CYP to participate and engage in them

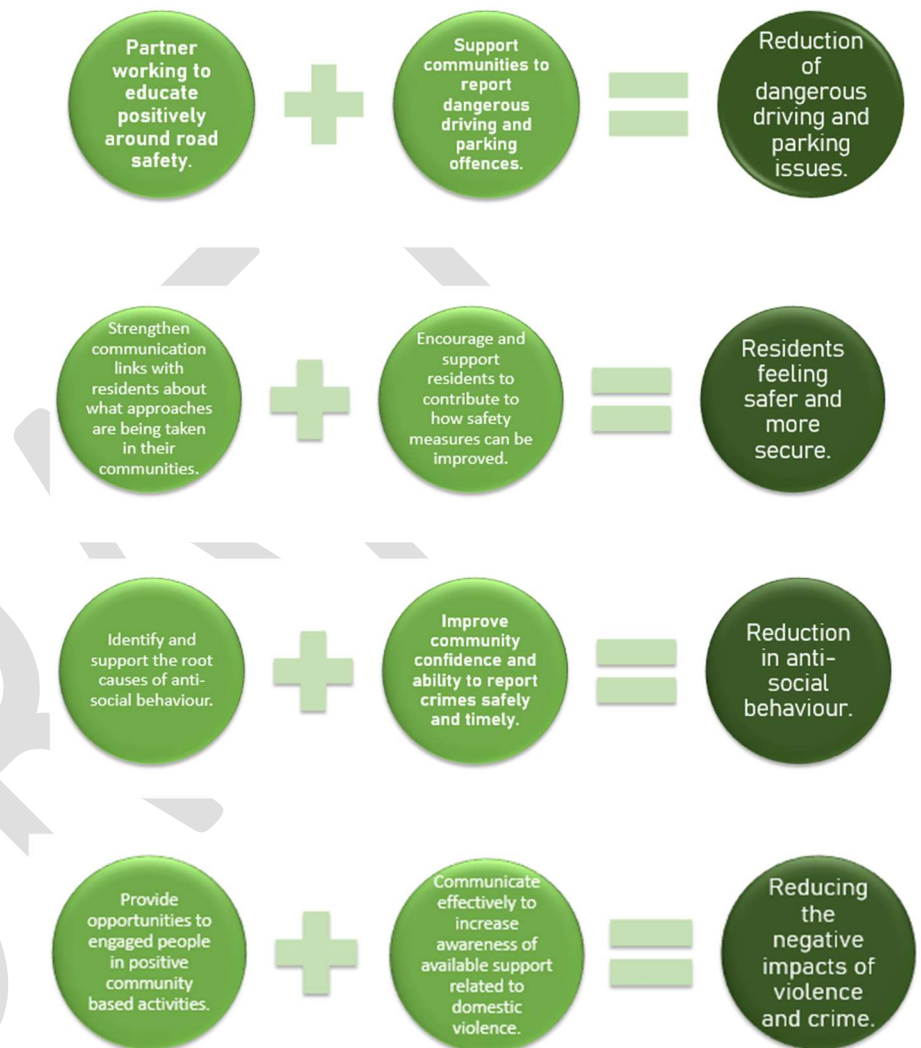
Doncaster Get Moving - Walking Strategy

Work with South Yorkshire Safer Roads Partnership to ensure Road Safety Training is offered to all primary schools in the Borough.

Work with South Yorkshire Safer Roads Partnership to explore how road safety training and promotional opportunities could be delivered through existing engagement and training opportunities.

You asked us to improve - Crime and Community Safety

Through coordination, continuous engagement, collaboration and communication we will work together to build on local strengths and assets across East locality to complete the following actions in order to reach each outcome.



*The plans and strategies detailed in the coming pages are examples of how we are currently working to support these priority areas and are not meant to represent a complete list. Extracts need to be considered in the context of the whole plan or strategy document. They do not include core service delivery of key partners.

Supporting Plans and Strategies

Doncaster Local Plan sustainability Appraisal

Provide more greenspaces and trees

Create new areas of biodiversity value

Offset / compensate for the loss of habitats and species as a result of development

Protect and restore priority species and habitats Geodiversity

Protect, maintain and improve sites of geodiversity importance

Environment & Sustainability

Use the Future Parks Programme to develop, implement and share best practice; and integrate new technologies into parks provision through the Smart Parks project.

Develop and implement a tree-planting programme, to include various sized sites from individual trees in gardens to strategic woodland creation where feasible

Maintain and improve current and future green infrastructure assets.

Support the continued development of the Doncaster Green Space Network – enhancing social & community capacity, developing local knowledge share/best practice.

Robust and fair enforcement activity in response to fly tipping and littering

Improve awareness of legal waste disposal contractors and the consequences of using unauthorised contractors

Effective and accessible communication and engagement to discourage fly tipping and littering.

Reduce energy use and encourage the production and use of renewable energy

Doncaster Borough Strategy 'Doncaster Delivering Together'

Reduce fly-tipping and graffiti and regularly clean the streets and roads

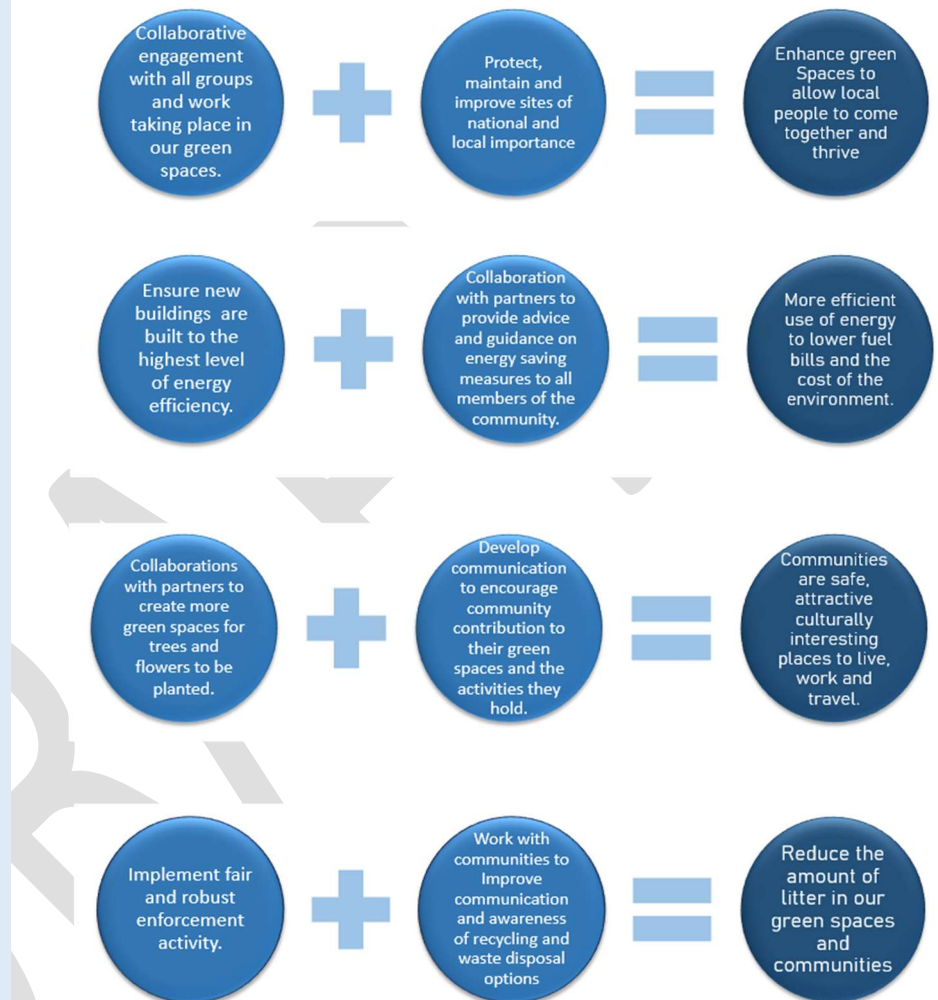
Housing Strategy

Aim to complete a new condition survey of privately owned homes

Use the survey's findings to design a long term Housing Retrofit Programme to raise energy efficiency standards for all homes.

You asked us to improve -Environment and Green Spaces

Through coordination, continuous engagement, collaboration and communication we will work together to build on local strengths and assets across the East locality to complete the following actions in order to reach each outcome.



*The plans and strategies detailed in the coming pages are examples of how we are currently working to support these priority areas and are not meant to represent a complete list. Extracts need to be considered in the context of the whole plan or strategy document. They do not include core service delivery of key partners.

Supporting Plans and Strategies

Cultural Strategy

Joined up marketing regarding the cultural offer for children and young people.

Doncaster Local Offer

Children and young people's forums within the council and with our partner organisations, through a model of 'for young people, by young people'.

Supporting our voluntary, community and faith sectors to increase high quality, accessible youth provision across the borough.

VCF sector working with C&YP to enable them to build their quality systems and access funding to deliver services.

Having accessible information in the form of a "What's On" across the borough for CYP.

Children and Young Peoples Plan

Team up with lots of different groups and services to deliver activities and programmes.

Capture CYP voice through appreciative inquiry and co-design and deliver action plan

Children & Young People Activities (Formerly Youth Strategy)

Engage with initiatives such as National Youth Work programmes, UK Youth Awards, British Youth Council, UK Youth Parliament and Young Advisors

Doncaster Borough Strategy 'Doncaster Delivering Together'

Increase the availability and invest in the quality of activities for families and young people

Use Family Hubs to deliver a range of activities, services and information.

Provide more equitable and inclusive opportunities to enjoy art, culture, sport and community activities.

Well Doncaster Community Plans

Provide CPD and training to all voluntary and paid staff who engage with young people to promote the benefits of physical activity

Influence decision makers to provide accessible and affordable community use of sports facilities

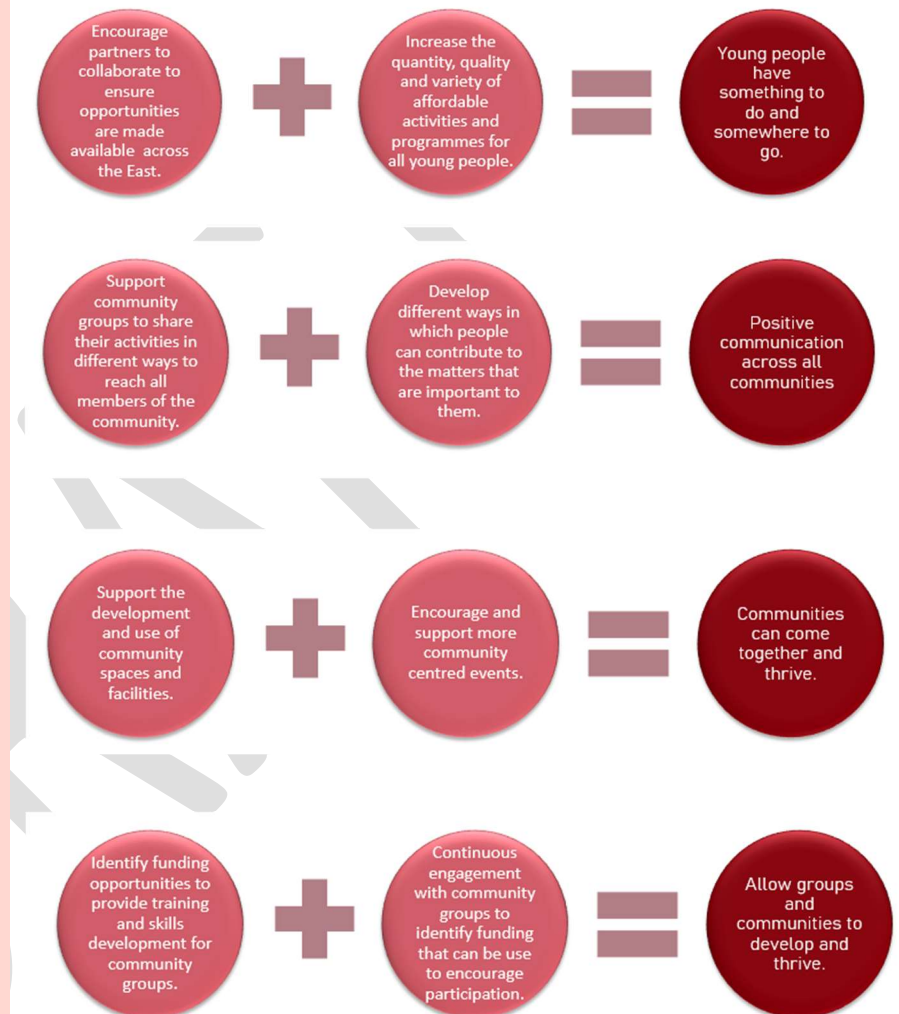
Doncaster Local Plan sustainability appraisal

Get people involved in local issues.

Make people proud of their own community and Doncaster

You asked us to do more for - Youth Provision and Community Pride

Through **coordination, continuous engagement, collaboration and communication** we will **work together to build on local strengths and assets** across the East locality to complete the following actions in order to reach each outcome.



*The plans and strategies detailed in the coming pages are examples of how we are currently working to support these priority areas and are not meant to represent a complete list. Extracts need to be considered in the context of the whole plan or strategy document. They do not include core service delivery of key partners.

Supporting Plans and Strategies

Doncaster Borough Strategy 'Doncaster Delivering Together'

Support residents to live independent, rewarding lives in the place they call home.

Strengthen community resilience and reduce health inequalities

Improve the all-age mental health support, including support and prevention for a zero-suicide borough.

Support the community spaces, facilities and networks that enable local people to come together, shape their area and thrive.

Develop a Compassionate Approach and improve the social conditions for better health.

Work towards becoming an even more Age-Friendly borough and Disability-Friendly borough.

Children and Young People's Plan

Deliver lots of programmes to support CYP and families' health and wellbeing

Get Doncaster Moving

Develop an integrated services approach in our priority areas (people on low incomes & inactive people) so that physical activity and sport can contribute to wider outcomes.

Influence and educate the workforce who engage with older adults, including health workers, social care providers and families on the importance of physical activity.

Influence changes to adult social care policy, to support a broader range of older people who are in need, to access advice and support about physical activity through healthcare professionals.

Develop a sustainable social prescribing and referral scheme, that signposts older people who are at increased risk of ill health, into personalised physical activity programmes.

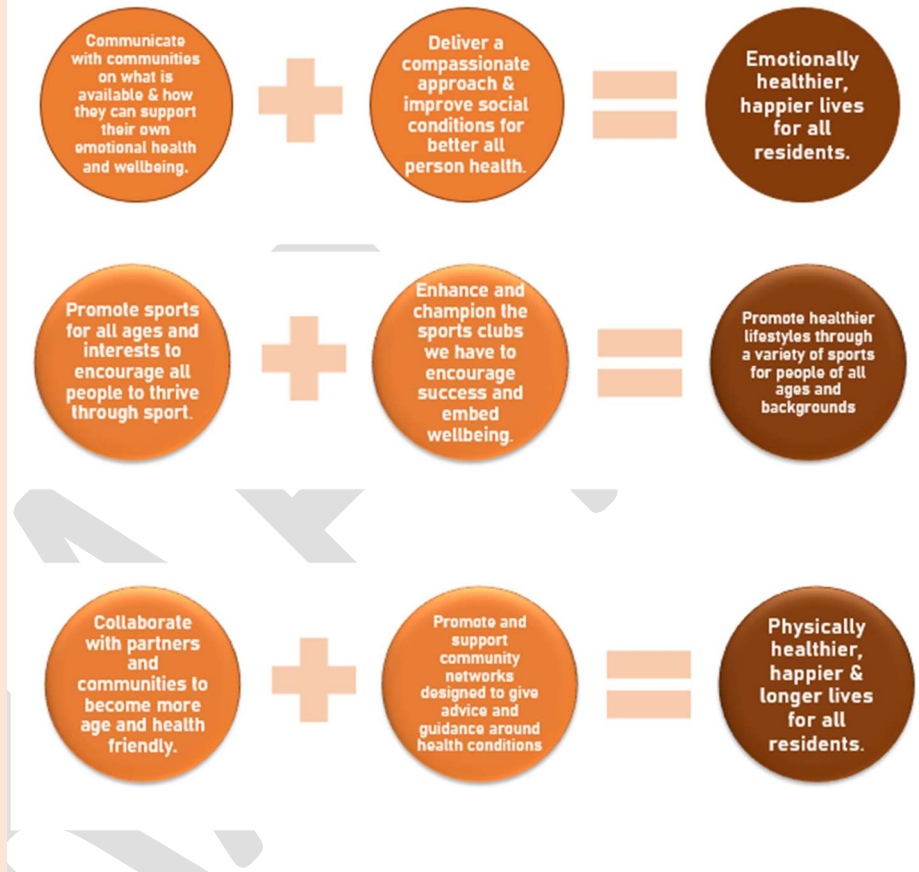
Health & Wellbeing Strategy

Active promotion of physical activity opportunities.

Continue to implement the recommendations of the Mental Health Review and by doing so, support the delivery of the National Mental Health Agenda.

You asked us to improve – Mental and Physical Health support

Through **coordination, continuous engagement, collaboration and communication** we will **work together to build on local strengths and assets** across the East locality to complete the following actions in order to reach each outcome.



The East will continue to support the Frailty project designed to provide early prevention through locality team working to promote longer independence and sustain healthy, happier lives.

The East is supporting through locality team working the support and information around Diabetes and the Pre-Diabetes to promote healthy, happier and longer lives.

*The plans and strategies detailed in the coming pages are examples of how we are currently working to support these priority areas and are not meant to represent a complete list. Extracts need to be considered in the context of the whole plan or strategy document. They do not include core service delivery of key partners.

Supporting Plans and Strategies

Doncaster Local Plan sustainability Appraisal

Ensure places can be accessed via public transport.

Create jobs and new businesses

Support existing businesses

Provide a skilled workforce

Improve educational attainment

Provide more/sufficient school places to address future need Skills & training

Improve qualifications and skills in young people

Create jobs and new businesses

Support existing businesses

Provide employment opportunities for everyone.

Doncaster Borough Strategy 'Doncaster Delivering Together'

Support the community spaces, facilities and networks that enable local people to come together, shape their area and thrive.

Support residents to take positive action for themselves and their communities.

Better connect the borough with reliable, appropriate and affordable public transport

Doncaster Housing Strategy

Work with our residents, voluntary sector and other partners to understand how we can all help tackle complex housing issues and tackle those things that might stop us being successful

Education and Skills Strategy 2030

Reform our Post-16 education and skills system to equip residents with the skills, ambition and attributes that allow them to thrive in life and work.

Work closely with industry to develop sectoral career pathways, strengthening our all-age careers advice and guidance offer.

Improve the availability and accessibility of adult learning.

Doncaster Local Plan

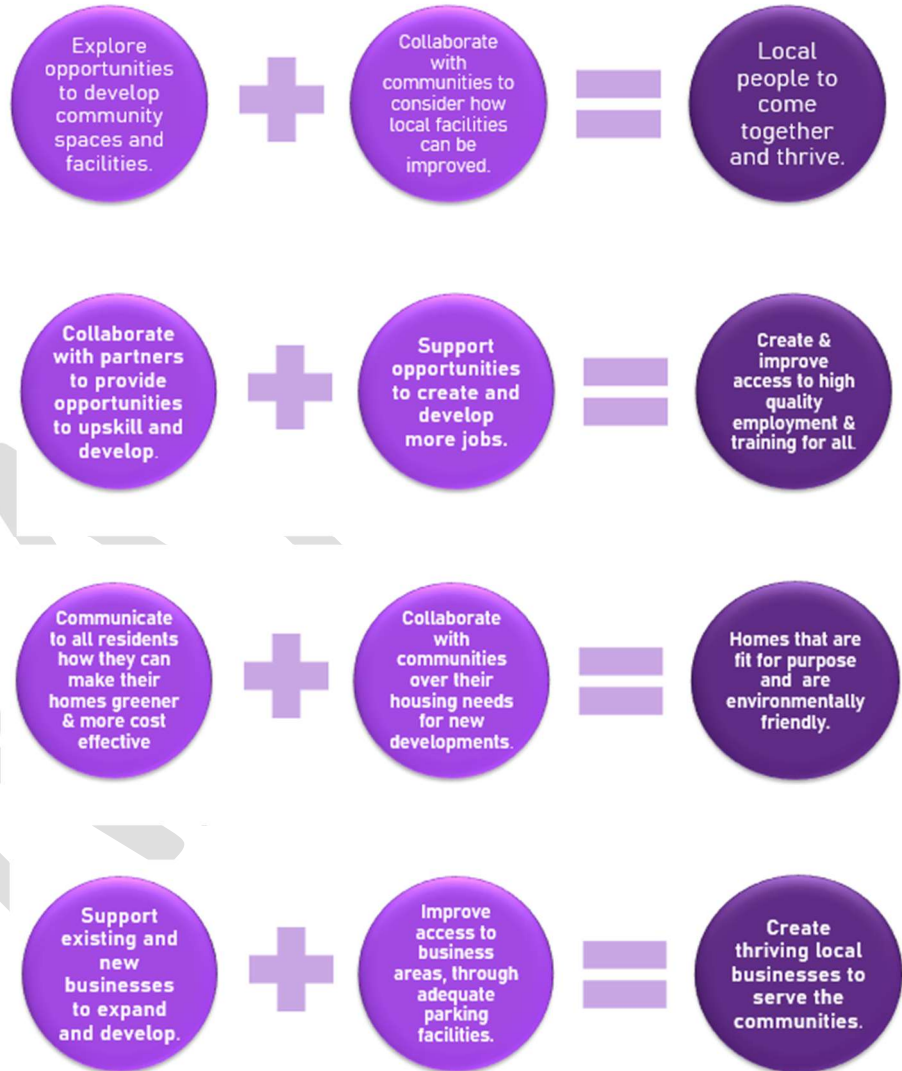
Major new employment sites to support 'Doncaster Main Urban Area.

Ensure places can be accessed via public transport.

Minimise travel to work distance

You asked us to improve - Business, Employment and Housing

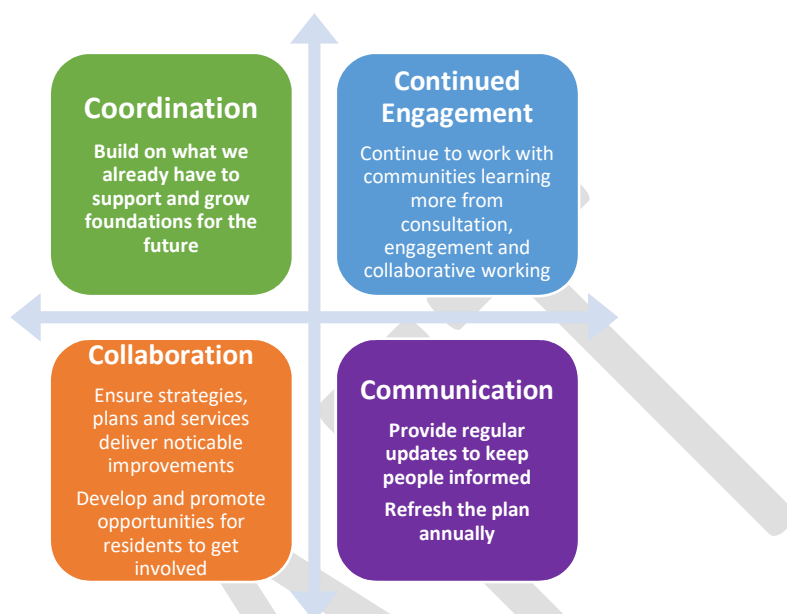
Through coordination, continuous engagement, collaboration and communication we will work together to build on local strengths and assets across the East locality to complete the following actions in order to reach each outcome.



*The plans and strategies detailed in the coming pages are examples of how we are currently working to support these priority areas and are not meant to represent a complete list. Extracts need to be considered in the context of the whole plan or strategy document. They do not include core service delivery of key partners.

What's next for Locality Plans?

People contributing to the priorities for improving their community is at the heart of this plan. Through the delivery of the Locality Plan, Over the next 12 months we will endeavour to build on the local assets and strengths in our communities to deliver this plan. We will seek to achieve this through effective coordination, continued engagement, collaboration and communication.



Engaging with local groups and networks is a continuous part of working Together Well in localities. As a resident who lives in the East Locality, you are encouraged to get involved in the plans activities and share the planned actions with as many people as possible, especially people working and living in Armthorpe, Edenthorpe and Kirk Sandall, Hatfield, Stainforth and Barnby Dun, Thorne and Moorends

What changes will I see?

In addition to the priorities identified in the plan, Team Doncaster are also changing the way we work in order to ensure support is being provided at a local level. There are a number of these changes that will happen imminently. These include:

- **Relevant teams will no longer be based centrally at the Doncaster Council Civic Office but will instead have an office base within the East locality. This will mean that our officers are embedded into the community and more easily accessible to residents.**
- **We will be opening Your Community Hubs at a number of locations across the East Locality, these will provide a drop-in opportunity for people needing support**
- **Your Life Doncaster website will now feature a dedicated information page for the East locality (www.yourlifedoncaster.co.uk/east). On this page you will be able to find out important information about your area such as what's on, local community groups, local contact details and news and information about how the plan is progressing**
- **There will be more Well Doncaster Officers in your community. Our Well Doncaster Officers have been placed in communities to support the delivery of grassroots projects that will have a lasting impact on people's lives. They are there to support the strengthening of our communities and improve health and wellbeing of residents in Doncaster, and as part of this plan, we are doubling the amount of Well Doncaster Officers in each area to continue the positive work they are already doing.**

We need everybody from council workers to voluntary groups and residents themselves to get involved with developing and delivering the plan. If you want to support us to help the East Locality thrive then we would love to hear from you.

**'Shape the future of your East Community.
Get involved'**

Contact us at

YourVoice@doncaster.gov.uk

Useful websites for more information:

www.teamdoncaster.org.uk

www.yourlifedoncaster.co.uk

www.voluntaryactiondoncaster.org.uk

DRAFT

DRAFT